



Setting up your Ultrasound System

Last Modified on 2024-12-04 15:00

Tricefy works with any imaging system and takes only a few seconds to configure.

To get started, select your device. If your device is not listed, refer to our general instructions:

 [See General Configuration Instructions](#)

GE Healthcare Ultrasounds



Voluson with Tricefy Inside



Voluson using external Tricefy Uplink



Vscan Air



Voluson Swift with Tricefy inside



LOGIQ E with Tricefy Inside

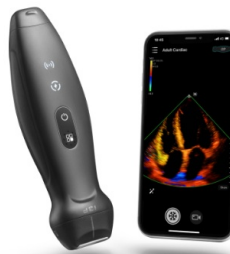


Vscan Extend with Tricefy Inside

Mindray Ultrasounds



DC Series



TE Air

Samsung Ultrasounds

Tricefy



H60A



HM70A



HS70A



WS80A

Philips Ultrasounds



Affiniti & EPIQ



IU22



HD11 & HD15



Lumify

Canon Ultrasounds



Aplio & Xario

