

Samsung WS80A Configuration Instructions

Last Modified on 2023-08-22 19:10

Follow the process below to configure your ultrasound system to send data to Tricefy.

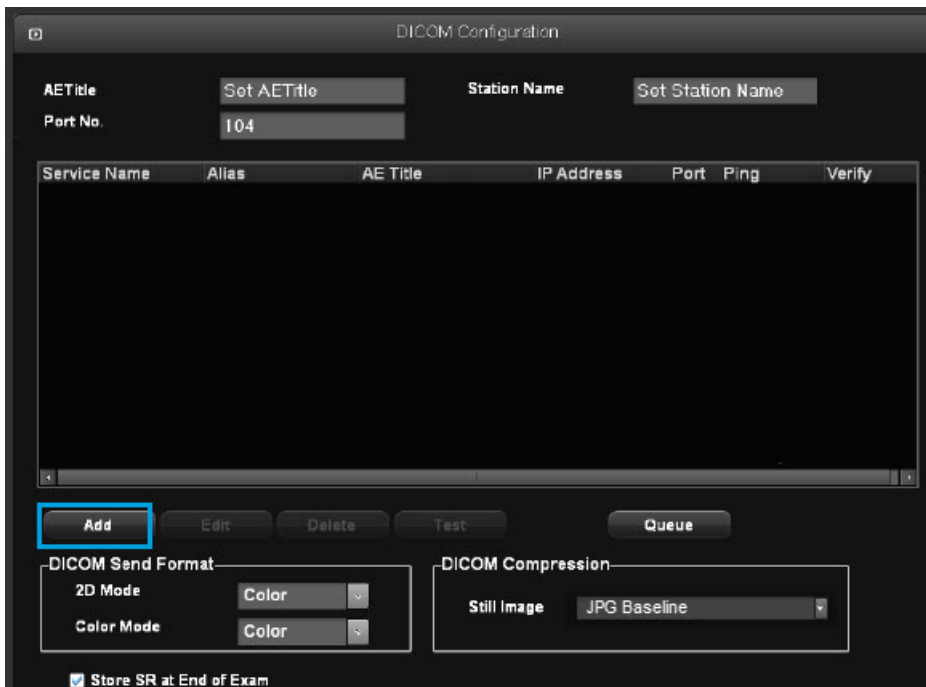
First, press the **Utility** button on the side of the touch panel, followed by the **DICOM** button:



The DICOM Configuration screen will display. This screen allows you to add new DICOM stores. These stores are like warehouse receiving centers; they receive the data from your ultrasound system.

We will create two stores: one for sending images to patients and one for archiving.

First, we will add the archiving store by clicking the **Add** button:



Enter the following information into the next window:

The image shows a 'DICOM Configuration' window with the following fields and values:

- Services : STORAGE
- Alias : (empty)
- AE Title : (empty)
- Transfer Mode : Batch
- Connect Timeout : 15
- IP Address : (empty)
- Port No. : 104
- Retry Interval : 30
- Maximum Retries : 1

Storage Options:

- Send Cine Loops
- Include Pixel Spacing
- Include 3D Volume

VOI LUT Setup:

- Window Center : 128
- Window Width : 256

Services: Select **Storage** from the drop-down menu

Alias: Trice Archive

AE Title: archive

Transfer Mode: Choose when to send study images to Tricefy

- Choose **Batch** to send all study images to Tricefy when the exam has ended (by pressing the **End Exam** button)
- Choose **Send as you Go** to send selected images to Tricefy when they are saved
- Choose **Manual** to select and send studies from the Exam List or in SonoView

IP Address = shown during installation or refer to [Account Settings](#)

Port = port Uplink was configured to listen on during install (refer to [Account Settings](#))

Press **Save** after entering the information.

Next, we will add the patient-sharing store by clicking the **Add** button again. Follow the steps outlined above and enter the following information:

Service: Select **Storage** from the drop-down menu

Alias: Trice Patient

AE Title: patient

Transfer Mode: Choose an option from the drop-down menu

IP Address = shown during installation or refer to [Account Settings](#)

Port = port Uplink was configured to listen on during install (refer to [Account Settings](#))

Our new stores are now listed on the DICOM Configuration screen. The last thing we want to do is make sure the DICOM Compression setting is set to **JPG Baseline**.

The image shows a close-up of the 'DICOM Send Format' and 'DICOM Compression' sections. The 'DICOM Compression' dropdown menu is highlighted with a red box and shows 'Still Image' selected, with 'JPG Baseline' as an option.

To correct the compression setting, click on each service listed above and select **JPG Baseline** from the drop-down menu.

We can make sure our system is working by pressing the **Test** button. This button only illuminates when a store is selected. A Normal result means you are ready to send studies to Tricefy.