



Getting Started for New Users

Last Modified on 08/29/2019 2:11 pm EDT

Welcome to Tricefy!

Here are few basic steps to help get you started:

Step 1: Create Account



Accept the invitation we send you to access your account

[Read Step 1](#)

Step 2: Install Uplink



Complete the Getting Started screen to set everything up

[Read Step 2](#)

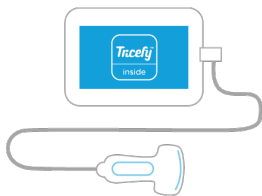
Step 3: Configuration



Begin your Tricefy experience

[Read Step 3](#)

Tricefy Inside



If you have a new GE Voluson or Vscan with a Tricefy Inside sticker, your device was manufactured to work with

[Learn how to get started with Tricefy Inside](#)

If you have data from a PACS or other system that you would like to archive on Tricefy, [contact us for assistance](#).