

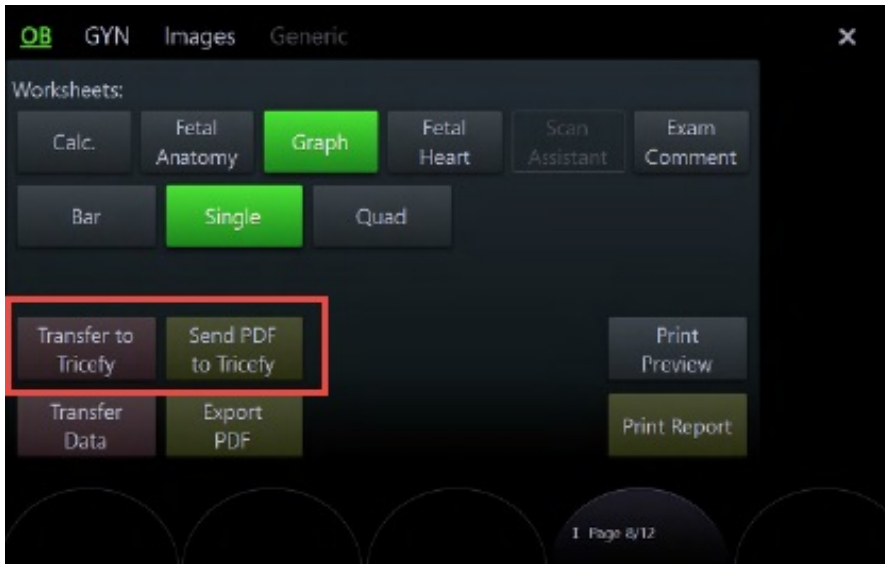
Sending Ultrasound Reports on newer Voluson E Series

Last Modified on 2023-12-14 15:37

Ultrasound PDF reports documents can be sent directly to Tricefy on Voluson E series BT19 and newer, including Voluson Expert 22+ series -- all without the need to map a network drive.

 [Learn how to send reports and PDF on older Volusons](#)

To send a report, access the Worksheet/Report menu on your ultrasound system:



- Select **Transfer to Tricefy** to send all structured report (SR) data to Tricefy
- Select **Send to Tricefy** to send a PDF report to Tricefy

Note: These buttons are only available if Tricefy is activated on the ultrasound. Visit tricefy.help/help/vol-setup to learn how to activate your Voluson.