

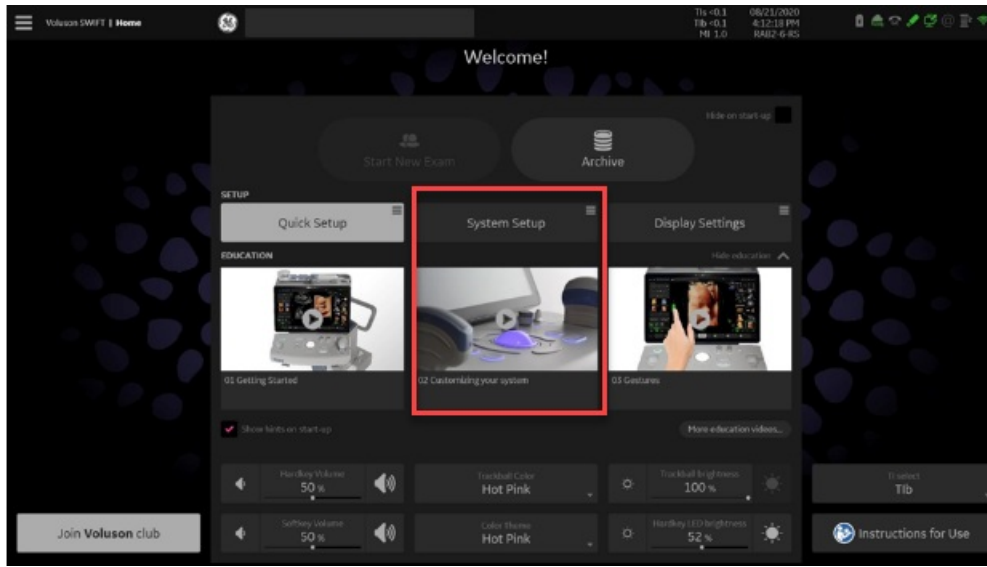
Voluson SWIFT with Tricefy Inside

Last Modified on 2024-05-28 18:07

GE Voluson ultrasound systems have Tricefy pre-installed. Additional software is not necessary in order to use Tricefy. Activate your account using the following steps:

- 1) Access the **Home** screen

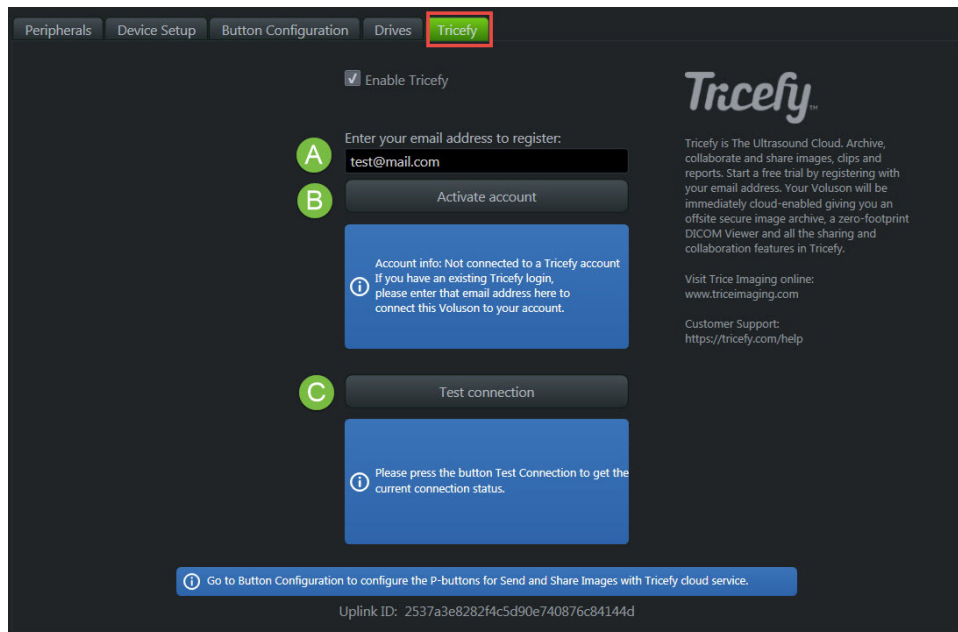
The **Home** screen will display after startup. If the system is already in use, press the three horizontal lines (top-left corner) and select **Home**



- 2) Select **System Startup**

It is recommended to skip the Quick Setup for configuring Tricefy Inside.

- 3) Select **Connectivity** from the side menu, followed by the **Tricefy** tab:



A - Enter your email address to authorize the account. This should be an IT or clinic administrator.

B - Select **Activate Account**. This process may take up to 20 seconds.



- A **green** message means the activation was successful
- An **orange** message the activation failed
 - If activation fails, confirm there are not any firewalls or routers blocking Port 443
 - If activation continues to fail, select the **Contact Tricefy Help Center** button at the bottom of this screen and we will contact you shortly to assist in getting your account activated

C - Select Test Connection to confirm your ultrasound system can connect to Tricefy

- A **green** message means the test was successful and you can continue with the steps below
- An **orange** message means the ultrasound system failed to connect to Tricefy
 - If the test fails, confirm there are not any firewalls or routers blocking Port 443
 - If the test continues to fail, select the **Contact Tricefy Help Center** button at the bottom of this screen and we will contact you shortly to troubleshoot the issue and get your system connected.

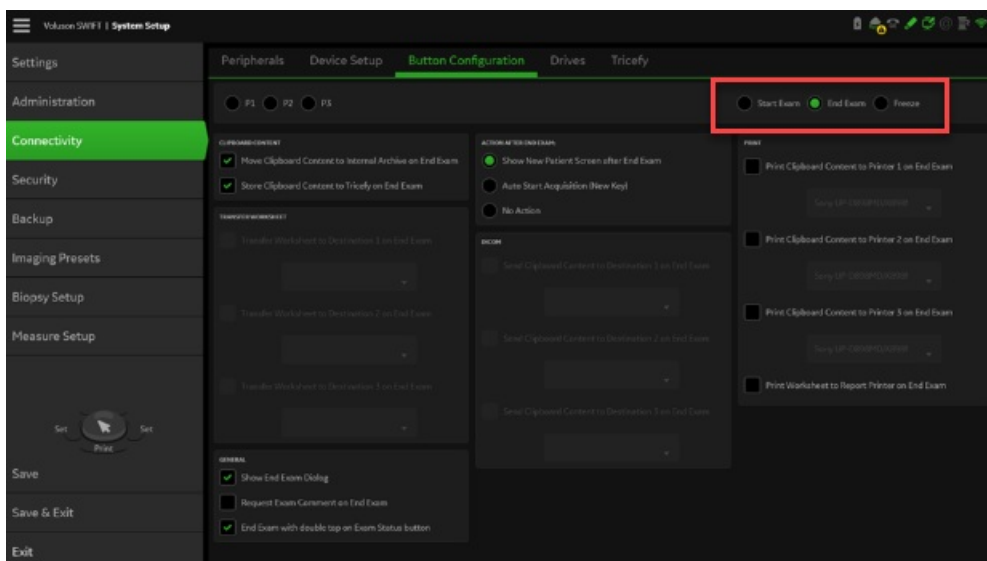
Sending Images to Tricefy

To program your ultrasound system to send exam data to Tricefy, select the **Button Configuration** tab.

You can program your system to either automatically send exam data to Tricefy once the exam has ended or by selecting a P button. Both options are described below.

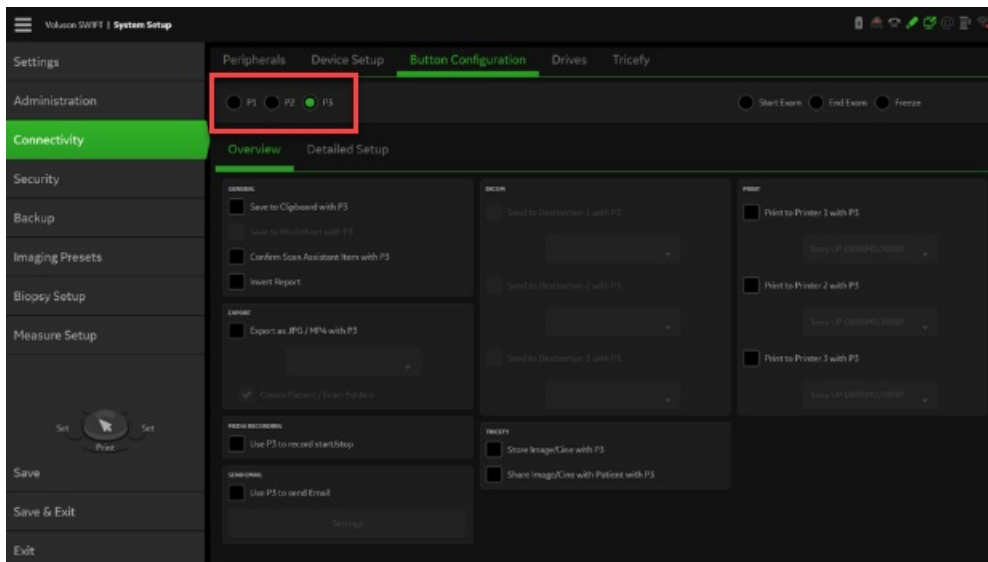
Sending Data at the End of Exam

To send data when the exam has ended, select the **End Exam** option and make sure **Move Clipboard Content to Interval Archive** and **Store Clipboard Content to Tricefy** are selected in the Clipboard Content box.



Sending Data with a P Button

To send data by pressing a P button, select the P button you would like to use (P1, P2, P3, P4, P5 or P6) and make sure **Save to Clipboard** is selected in the General box. Select **Store Image/Cine** and **Share Image/Cine** in the Tricefy box.



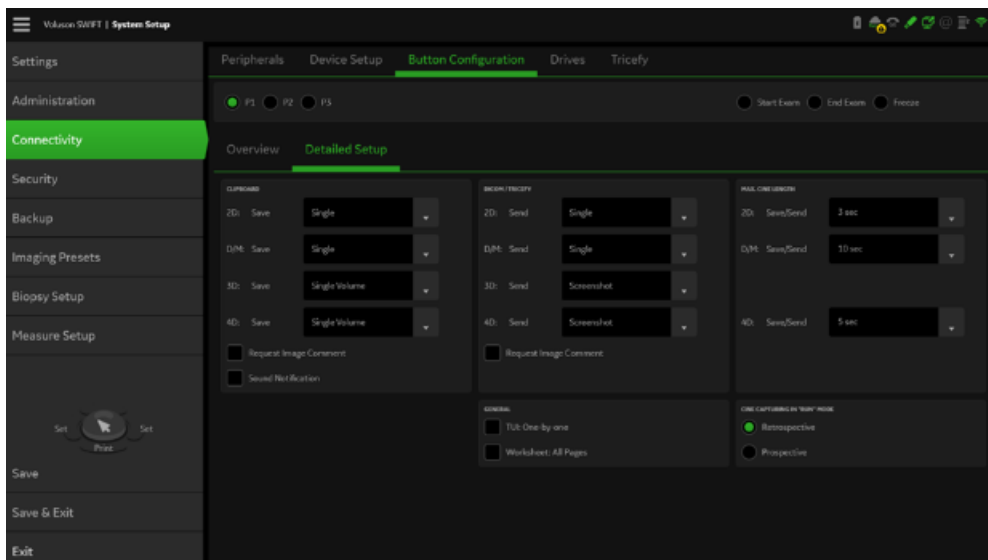
To learn more about sending studies to patients and doctors, refer to [Step 3 of our Getting Started Guide](#).

Sending Worksheets and Reports

Refer to tricefy.help/help/pdfsendvol to learn how to send worksheets and reports to Tricefy in one easy step.

Image/Cine Selection

To enable sending both still images and cines with one button, we recommend the following settings under **Detailed Setup**:



- 2D: Automatic
- D/M: Single
- 3D: Automatic
- 4D: Automatic

If you have additional ultrasound systems to setup that don't already have Tricefy installed, refer to the following help pages:

<http://www.tricefy.help/help/uplink>

<http://www.tricefy.help/help/configuration>



Compression Settings:

Confirm your compression settings are correct:

 [Compression Settings for Voluson](#)
